



**REPLACEMENT PARTS INC.**

**REPLACEMENT WHEEL CATALOG**

**13 OHIO LOOP  
DONALDSON INDUSTRIAL AIRPARK  
GREENVILLE, SC 29605  
(864)299-3000 \* FAX 299-3021  
[www.replacement-partsinc.com](http://www.replacement-partsinc.com)**

## **REPLACEMENT PARTS INC.**

**13 OHIO LOOP  
GREENVILLE SC 29605**

**[www.replacement-partsinc.com](http://www.replacement-partsinc.com)**

**(864)299-3000 \*FAX 299-3021**

Welcome! This catalog is presented to you with our compliments. We hope that you find it useful. The enclosed information is representative of the parts that we handle, but it by no means covers the full scope of our ability to serve your needs in material handling. We specialize in locating or reproducing obsolete, foreign, or hard to find parts. Our research is aided by our participation in a computerized national network. We also refurbish all types of hoists, cabs, and monotractors.

Please take a few moments to look over our catalog. It would be a pleasure to discuss with you your needs and demonstrate to you where your cost savings may lie.

Replacement Parts for the following manufacturers.

1. Louden
2. Cleveland Tramrail
3. Spanmaster
4. Twin City
5. American Monorail
6. P&H (Not in catalog)

Contact: John Ludwig

Sincerely,

*John E. Ludwig*

John E. Ludwig  
President

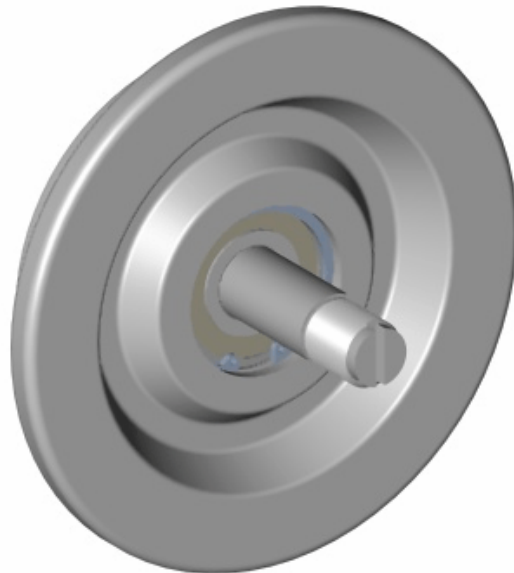
Established 1986  
Replacement Parts Inc.

# REPLACEMENT PARTS INC

## Replacement Wheels

Designed to fit Spanmaster trolleys 16-100A,16-100J,16-100K and 16-100L (flanged wheel) on 100 and 200 series track. Regreasable or Nonregreasable wheel assembly. Replacement Parts wheels are made from high strength steel or per customer's specifications and the treads and flanges are induction hardened to Rockwell 45 to 50. The wheel bearing bores are remachined after the wheels have been heat treated to assure proper concentricity. High quality precision ball or roller bearings are used on a machined steel axle to assure long life and easy rolling.

Replacement Parts Part# WA16100B4 ( 4" Dia. )



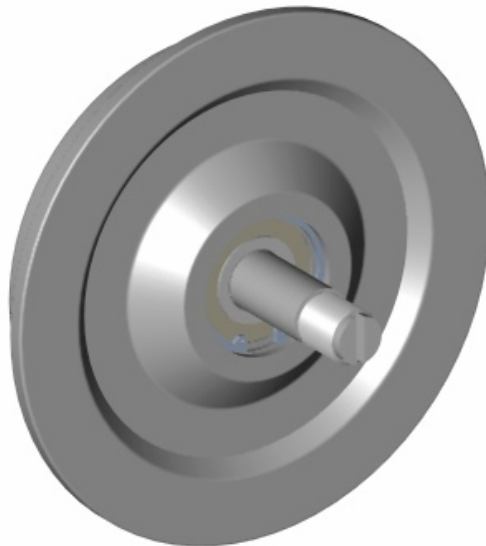
**REF: Spanmaster Part Number #16-100E**

# REPLACEMENT PARTS INC

## Replacement Wheels

Designed to fit Spanmaster trolleys 16-101A,16-101J,16-101K and 16-101L (flanged wheel) on 100 and 200 series track. Regreasable or Nonregreasable wheel assembly. Replacement Parts wheels are made from high strength steel or per customer's specifications and the treads and flanges are induction hardened to Rockwell 45 to 50. The wheel bearing bores are remachined after the wheels have been heat treated to assure proper concentricity. High quality precision ball or roller bearings are used on a machined steel axle to assure long life and easy rolling.

Replacement Parts Part# WA16101B4 ( 5" Dia. )



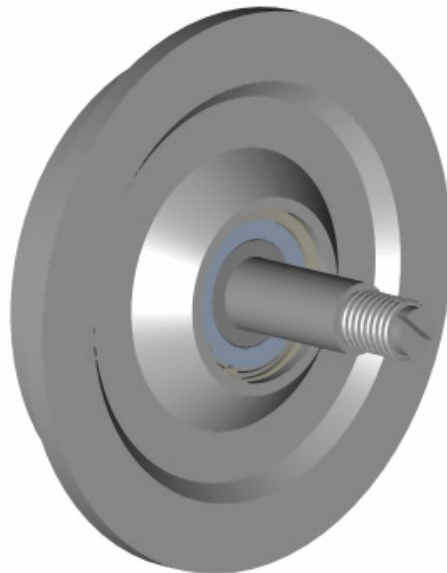
**REF: Spanmaster Part Number - 16-101E**

# REPLACEMENT PARTS INC

## Replacement Wheels

Designed to fit Spanmaster trolleys 16-102A,16-102J,16-102K and 16-102L (flanged wheel) on 100 and 200 series track. Regreasable or Nonregreasable wheel assembly. Replacement Parts wheels are made from high strength steel or per customer's specifications and the treads and flanges are induction hardened to Rockwell 45 to 50. The wheel bearing bores are remachined after the wheels have been heat treated to assure proper concentricity. High quality precision ball or roller bearings are used on a machined steel axle to assure long life and easy rolling.

Replacement Parts Part# WA16102B4 (5" Dia. )



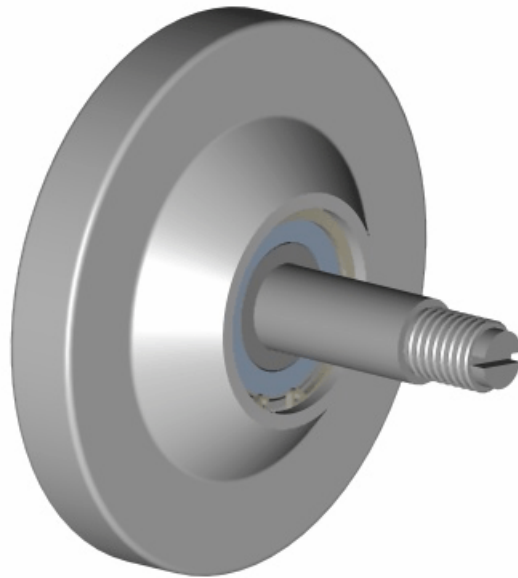
**REF: Spanmaster Part Number - 16-102E**

# REPLACEMENT PARTS INC

## Replacement Wheels

Designed to fit Spanmaster trolleys 16-103A,16-103J,16-103K and 16-103L (flangeless wheel) on 100 and 200 series track. Regreasable or Nonregreasable wheel assembly. Replacement Parts wheels are made from high strength steel or per customer's specifications and the treads and flanges are induction hardened to Rockwell 45 to 50. The wheel bearing bores are remachined after the wheels have been heat treated to assure proper concentricity. High quality precision ball or roller bearings are used on a machined steel axle to assure long life and easy rolling.

Replacement Parts Part# WA16103B4 ( 5" Dia. )



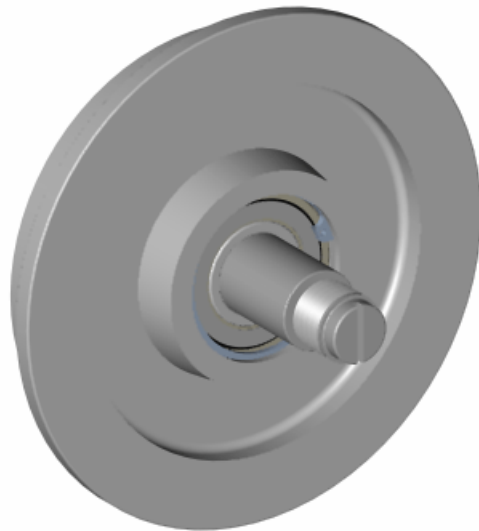
**REF: Spanmaster Part Number #16-103E**

# REPLACEMENT PARTS INC

## Replacement Wheels

Designed to fit Spanmaster trolleys 16-104A,16-104K and 16-104L (flanged wheel) on 100 and 200 series track. Regreasable or Nonregreasable wheel assembly. Replacement Parts wheels are made from high strength steel or per customer's specifications and the treads and flanges are induction hardened to Rockwell 45 to 50. The wheel bearing bores are remachined after the wheels have been heat treated to assure proper concentricity. High quality precision ball or roller bearings are used on a machined steel axle to assure long life and easy rolling.

Replacement Parts Part# WA16104B4 ( 6.5" Dia. )



REF: Spanmaster Part Number - 16-104E

# REPLACEMENT PARTS INC

## Replacement Wheels

Designed to fit Spanmaster trolleys 16-105A,16-105K and 16-105L (flangeless wheel) on 100 and 200 series track. Regreasable or Nonregreasable wheel assembly. Replacement Parts wheels are made from high strength steel or per customer's specifications and the treads and flanges are induction hardened to Rockwell 45 to 50. The wheel bearing bores are remachined after the wheels have been heat treated to assure proper concentricity. High quality precision ball or roller bearings are used on a machined steel axle to assure long life and easy rolling.

Replacement Parts Part# WA16105B4 ( 6.5" Dia )



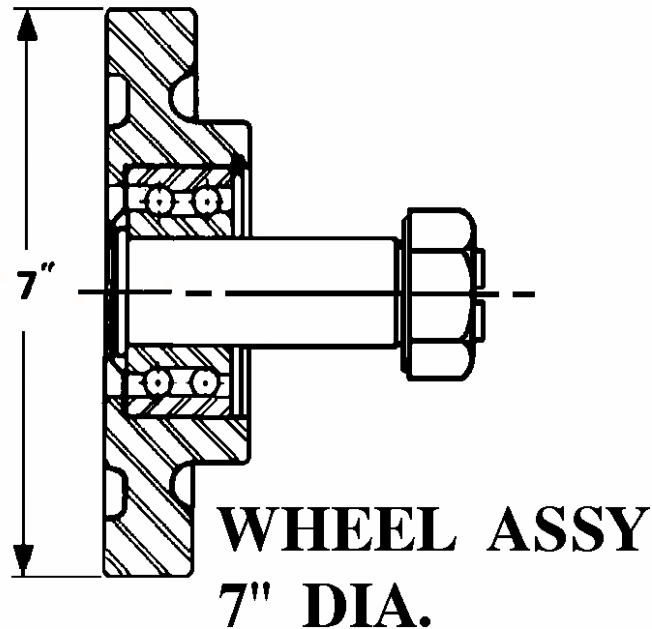
REF: Spanmaster Part Number - 16-105E

# REPLACEMENT PARTS INC

## Replacement Wheels

Designed to fit Spanmaster trolley 16-109A,(flangeless wheel) on 100 and 200 series track.  
Regreasable or Nonregreasable wheel assembly. Replacement Parts wheels are made from high strength steel or per customer's specifications and the treads and flanges are induction hardened to Rockwell 45 to 50. The wheel bearing bores are remachined after the wheels have been heat treated to assure proper concentricity. High quality precision ball or roller bearings are used on a machined steel axle to assure long life and easy rolling.

Replacement Parts Part# WA16106B4



REF: Spanmaster Part Number - 16-106E