



REPLACEMENT PARTS INC.

REPLACEMENT WHEEL CATALOG

**13 OHIO LOOP
DONALDSON INDUSTRIAL AIRPARK
GREENVILLE, SC 29605
(864)299-3000 * FAX 299-3021
www.replacement-partsinc.com**

REPLACEMENT PARTS INC.

**13 OHIO LOOP
GREENVILLE SC 29605**

www.replacement-partsinc.com

(864)299-3000 *FAX 299-3021

Welcome! This catalog is presented to you with our compliments. We hope that you find it useful. The enclosed information is representative of the parts that we handle, but it by no means covers the full scope of our ability to serve your needs in material handling. We specialize in locating or reproducing obsolete, foreign, or hard to find parts. Our research is aided by our participation in a computerized national network. We also refurbish all types of hoists, cabs, and monotractors.

Please take a few moments to look over our catalog. It would be a pleasure to discuss with you your needs and demonstrate to you where your cost savings may lie.

Replacement Parts for the following manufacturers.

1. Louden
2. Cleveland Tramrail
3. Spanmaster
4. Twin City
5. American Monorail
6. P&H (Not in catalog)

Contact: John Ludwig

Sincerely,

John E. Ludwig

John E. Ludwig
President

Established 1986
Replacement Parts Inc.

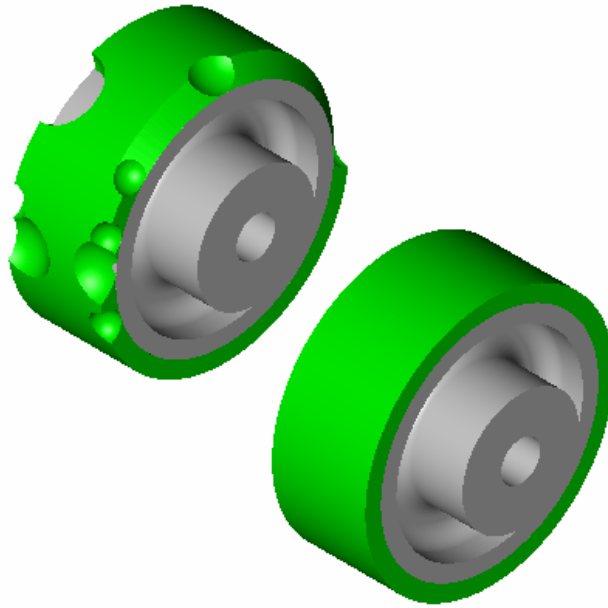
REPLACEMENT PARTS INC.

13 OHIO LOOP
GREENVILLE SC 29605

www.replacement-partsinc.com

(864)299-3000 *FAX 299-3021

**RETREAD SERVICE
FOR INDUSTRIAL MOLDED ON WHEELS**



POLYURETHANE: Ideally suited to conditions requiring high load capacities, pulling ease, resistant to oil, solvents, and extremely low temperatures.